

# **MICRO-PRISMATIC DOT TAPE**

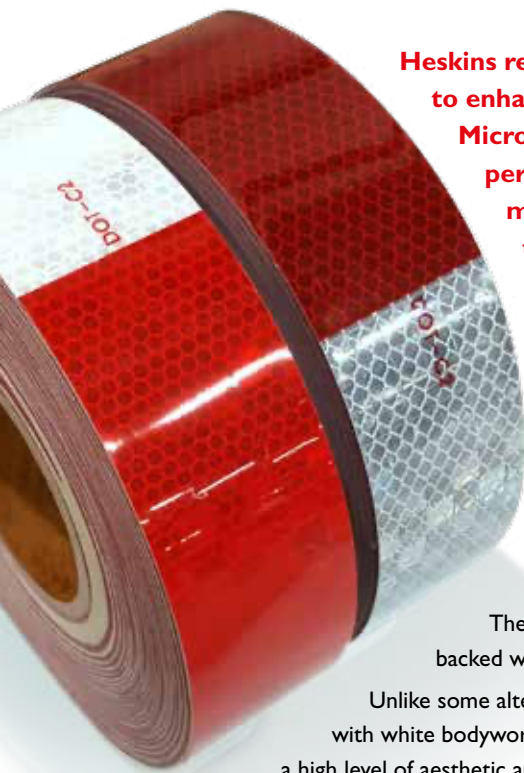
for long range reflectivity

**REFLECTIVE TAPES  
DESIGNED TO MEET  
FMCSA REQUIREMENTS FOR  
VEHICLE CONSPICUITY**

**HESKINS** //

# MICRO-PRISMATIC DOT TAPE

for long range reflectivity



Heskins reflective conspicuity markings are designed to enhance visibility and detection. Our range of Micro-Prism DOT tapes give outstanding reflective performance over long distances. In tests the micro-prism tape was visible from more than 3 times the distance of glass bead based alternatives.

We offer metalized and sealed-film variants.

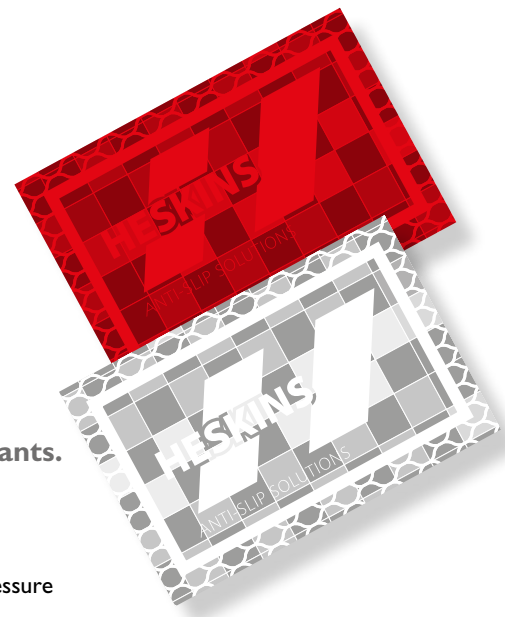
### Metalized conspicuity tape

The metalized conspicuity tape consists of vacuum deposition of aluminum coated micro-prisms with a pressure sensitive adhesive and clear poly liner.

### Sealed conspicuity tape

The sealed conspicuity tape consists of micro-prisms, sealed and backed with a pressure sensitive adhesive and clear poly liner.

Unlike some alternatives, our sealed-film type is a pure white which blends well with white bodywork making it an ideal choice for manufacturers looking to achieve a high level of aesthetic appeal for their product.



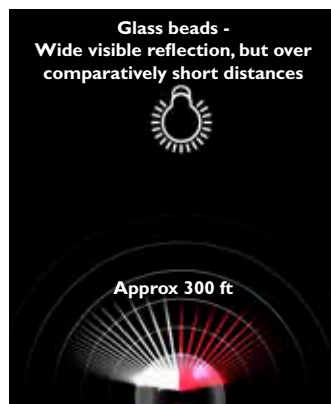
### Customization

Both variants of tape can be customized with brand logos or contact details with red logo/text on red base or white logo/text on white base.

## Glass bead vs micro-prismatic; what's the difference?

There are significant differences in glass bead and micro-prismatic technology.

### Glass bead DOT tape

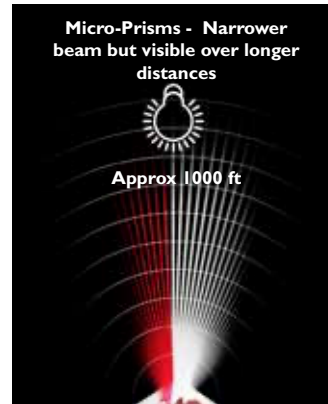


bright at long distances as that of microprismatic tape but it does reflect back over a wider angle which may be preferred in some applications.

A suspended honeycomb shaped grid of glass beads are used to bend light and reflect it back to the light source. Glass bead DOT tape is less expensive to produce than microprismatic tape making it more economical to buy, although it can be more time consuming to apply.

The cone of light isn't as

### Micro-Prismatic DOT tape



Micro-prismatic DOT tape is much more efficient at reflecting light. It's surface is covered in accurate, man-made, 3 point prisms, and when the light bends and reflects inside these, it can return up to 80% of the light straight back to the source, making the reflection much brighter. More complex manufacturing requirements does make micro-prismatic DOT tape more expensive, but it is more durable and much more effective over long distances. Micro-prismatic material is also much easier than glass bead to apply.

Micro-prismatic DOT tape is much more efficient at reflecting light. It's surface is covered in accurate, man-made, 3 point prisms, and when the light bends and reflects inside these, it can return up to 80% of the light straight back to the source, making the reflection much brighter. More complex manufacturing requirements

## Heskins reflective material is certified to meet the needs of the FMVSS 108/ ASTM (D4956)

Standard	Property	Heskins DOT2RW
FMVS 108 S8.2.1	Construction	Passed
FMVS 108 S8.2.1	Pattern Dimensions	Passed
FMVS 108 S8.2.1	Certification marking	Passed
FMVS 108 S8.2.1	Coefficient of retroreflection	Passed
ASTM D4956-90	Adhesion (ASTM D4956)	Passed
ASTM D4956-90	Daytime color and luminance	Passed

## ASTM E-810 test for coefficient of retro-reflective sheeting - sample results

Heskins reflective material greatly exceeds the minimum coefficient of retro-reflection required by FMVSS 108. The measurements are made in agreement with ASTM E-810 "Standard test method for coefficient of retro-reflective sheeting"

Results below are given in candlepower per square foot (cd/lux/ft<sup>2</sup>). This information should be considered typical only and should not be used for specification purposes. Copies of full test data is available on request.

### Observation angle 0.20°

#### White components

Entrance Angle	-4°	30°	45°
<b>ASTM E810</b>	<b>250</b>	<b>250</b>	<b>60</b>
DOT2RW66MS	677.9	451.9	226.7
DOT2RW711MS	632.3	396.7	198.6
MDOT2RW66	513.1	429.9	244.2
MDOT2RW711	531.1	480.4	287.3

#### Red components

Entrance Angle	-4°	30°	45°
<b>ASTM E810</b>	<b>60</b>	<b>60</b>	<b>15</b>
DOT2RW66MS	147.7	92.4	43.9
DOT2RW711MS	152.3	88.2	41.3
MDOT2RW66	134.8	113.3	58.4
MDOT2RW711	156.6	130.5	69.3

### Observation angle 0.50°

#### White components

Entrance Angle	-4°	30°	45°
<b>ASTM E810</b>	<b>65</b>	<b>65</b>	<b>15</b>
DOT2RW66MS	351.2	122.8	91.3
DOT2RW711MS	345.0	114.5	81.7
MDOT2RW66	128.9	133.2	77.7
MDOT2RW711	135.0	115.3	56.0

#### Red components

Entrance Angle	-4°	30°	45°
<b>ASTM E810</b>	<b>15</b>	<b>15</b>	<b>4</b>
DOT2RW66MS	71.1	27.2	20.0
DOT2RW711MS	75.4	25.8	18.4
MDOT2RW66	32.8	27.3	16.2
MDOT2RW711	35.8	21.8	13.9

## Availability

Product Code	Item	Roll length	Rolls per box
DOT2RW66MS	Sealed film 2" - 6/6	150 ft	6
DOT2RW711MS	Sealed film 2" - 7/11	150ft	6
MDOT2RW66	Metallised 2" - 6/6	150 ft	6
MDOT2RW711	Metallised 2" - 7/11	150 ft	6



Tough - can withstand repeated washing and winter weather



Easy to apply

ANTI-SLIP SOLUTIONS

HESKINS



DOT-C2

HESKINS

ANTI-SLIP SOLUTIONS

Heskins LLC,  
PO BOX 559  
East Butler, PA 16029

877-900-8359  
mail@heskins.us  
www.heskins.us



# MICRO-PRISMATIC DOT TAPE

for long range reflectivity

- 3 times the reflective range of glass bead technology from direct illumination
- Easy to apply
- Clean true-white sections \*
- Longer operational lifespan in like for like conditions

\*Sealed film type

## Accreditations / Compliances



The consistently high performance of Heskins reflective materials make them some of the most competitive products on the market.

The Vehicle Conspicuity Marking range is chemical, corrosion and impact resistant, and is FMVSS 108 and ASTM D4956 DOT certified.